



***KHAN arms***

**SEMI AUTOMATIC  
GAS OPERATED  
SHOTGUN**

***venator***®

## CONTENTS

Introduction .....	
Operation .....	
Safety Rules .....	
Ammunition Specifications .....	
Assembly .....	
Manual Trigger Safety .....	
Loading .....	
Unloading .....	
Disassembly .....	
Removing and Reinstalling Choke Tubes .....	
Removing the Magazine Plug .....	
Maintenance .....	
How to Use Pistons .....	
Adjustment and Options - Changing The Drop.....	
Choke Tubes Information .....	
General Assembly .....	
Parts Diagram .....	

## **INTRODUCTION**

This manual provides important information for assembling and using your new gun. Please read your Owner's Manual carefully before handling the gun.

Follow safe gun handling procedure at all times. Get instructions from a competent firearms instructor before using the firearm. If you have questions or concerns about the assembly or the operation of your gun, see your dealer, or a qualified gunsmith. Keep this manual, and consult it as needed. If you sell or transfer your gun, make sure the manual stays with the gun. This shotgun, which is produced with the latest possibilities of the contemporary technology, is reliable and practical about its aesthetics , its lightness, its operating system and its expertise in service.

## **OPERATION**

This semi-automatic shotgun uses gas pressure from the discharged shell in a precision, spring-loaded mechanism to eject the empty shell, and load a new cartridge into the chamber. The system reduces recoil, and permits the shooter to concentrate on the target.

This shotgun is produced in the high standards of technology and craftsmanship. The instruction in this book will help to assure that it delivers the fine performance for which it was designed.

## **SAFETY RULES**

- 1.** Always treat all firearms as if they were loaded. Don't rely on the safety. Keep the muzzle pointed in a safe direction at all times.
- 2.** Never cross a fence, climb a tree or jump across a ditch with a loaded gun. Always carry your gun so that you can control the direction of the muzzle if you fall or tumble.
- 3.** Never load or carry loaded gun until you are ready to use it. Never leave a loaded gun unattended, or allow a loaded gun in a building or vehicle.
- 4.** Watch your muzzle, so that the other person doesn't have to. Never point any gun, loaded or unloaded, at anything you do not intend to shoot.
- 5.** Keep guns and ammunition separately, and in locked storage. Use a trigger lock or cable lock on the gun.

6. Don't shoot unless you are absolutely sure of your target and what is beyond it. Never shoot at hard, flat surfaces or at water.
7. Know the range of your gun. Shotgun pellets can travel 500 yards, and shotgun slugs have a range of 1/2 mile. Always be sure of your backstop, and what lies beyond.
8. Always wear eye and ear protection when shooting. Make sure that people close to you are similarly protected.
9. Always be sure the barrel is clear of any obstruction. Each time you pick up the gun, check the barrel for any possible obstruction. Make sure the barrel is clean, and free of dirt or grease before shooting.
10. Use the right ammunition. Always use clean, dry, original factory-loaded ammunition of the proper type and gauge for your gun. Carry only the proper ammunition for the gun you are shooting. If you are shooting 12 gauge, do not carry 20 gauge ammunition. A gun is as safe as the person using it. Make sure that each person who handles the firearm has read the owner's manual, and understood and observed safe gun handling procedure.

## **AMMUNITION**

### **USE ONLY SUITABLE AMMUNITION**

This gas-operated semi-automatic shotgun is chambered for 3 inch magnum shells. It is designed to be used with factory-loaded shells between 2 3/4" and 3" in length. For 12 Gauge use the cartridges between 28 gr. (1 oz.) and 52 gr. (1 7/8 oz.)

Use of re-loaded ammunition voids the factory warranty.

**WARNING:** Do not use 3 1/2 inch shells in this shotgun.

**WARNING:** Never shoot slugs with a full choke. Use cylinder choke (5) and improved cylinder choke (4), which are marked with five cuts and four cuts.

**WARNING:** Never use cartridges with a case longer than the chamber, as this would have serious consequences for both the gun and the shooter.

**WARNING:** Never shoot steel shot with a full choke. Use only modified, improved cylinder or skeet choke tubes, marked three, four and five notches respectively.

**Note:** Always use ammunition that is powerful enough to fully cycle the action.

## **ASSEMBLY**

### **MOUNTING THE BARREL TO THE RECEIVER**

Make sure the barrel is clean and free of heavy lubrication. Remove the fore-end by unscrewing the magazine cap (counter clockwise). Slide the fore-end off the magazine tube. Mount the barrel to the receiver by sliding the barrel into the receiver, with the barrel ring on the magazine tube. Pull the bolt handle half way back to fully seat the barrel in the receiver. (See figure 1-2)

### **MOUNTING THE MAGAZIN CAP**

Drop the carrier by pressing trigger guard latch button (the button beside the trigger guard). Pull back the bolt handle and the bolt should stay open. Mount the magazine cap by carefully sliding it over the magazine tube, and seating it into the receiver. (See figure 3) Screw the magazine cap onto the front of the magazine tube, finger tight. Close the bolt by pressing the cartridge latch button (the button on the side of the receiver).



Figure 1



Figure 2



Figure 3

## MANUAL TRIGGER SAFETY

Before loading the gun, make sure the manual trigger safety is on. To activate the manual trigger safety, press the manual safety button on the side of the trigger guard from the left side of the gun to the right. When the trigger safety is "on" the black button will protrude from the right side of the trigger guard. When the trigger safety is "off", the button will protrude from the left side of the trigger guide, and the red band around the button will be visible. The manual trigger safety is intended only to lock the trigger. It is not a substitute for safe gun handling.

## LOADING

Put the manual trigger safety "on". Pull the bolt handle fully to the rear, and release it. Load cartridges by sliding them forward into the magazine tube, depressing the cartridge carrier as you do so. (See figure 4a)

**PLACING CARTRIDGE ON THE CARRIER** After loading the magazine tube, pull the trigger guard latch button and the cartridge will drop onto the carrier (see figure 4b-4c).

## LOADING A CARTRIDGE INTO THE BARREL

In order to move a cartridge from carrier to the chamber, pull the bolt handle fully to the back, and release it. The magazine tube holds 2 cartridges when the magazine plug is installed. When the magazine plug has been remote, the magazine tube holds five pieces of 2 3/4 "cartridges of four pieces of 3" cartridges when the plug has been removed. To load an additional cartridge, load one cartridge to the barrel, and then load other cartridges to the magazine tube, and pull the trigger guard latch button to drop the cartridge from magazine tube to the carrier. When you are ready to fire, put the manual trigger safety into the "off" position. The gun now is ready to fire.



Figure 4a



Figure 4b



Figure 4c

## UNLOADING

Spent cartridges will be ejected automatically. To unload the unspent cartridges from the gun, first of all be sure that the safety button is in the "on" position. Never permit your finger or another object to come in contact with the trigger while unloading. Pull the bolt handle to the rear to eject any cartridge in the chamber. If there is a cartridge in the chamber and a cartridge on the carrier, this will also load the cartridge from the carrier to the chamber. To eject that cartridge, pull and release the bolt handle again.

If cartridge remains in the magazine tube, pull the cut off latch button to place the cartridge onto the carrier. Pull and release the bolt handle again to load that cartridge to the chamber, than pull it again to eject the cartridge from the chamber. Continue this operation until all the cartridges have been ejected (Fig. 5a and Fig. 5b).

Always check to make sure that the gun is completely unloaded when you are not shooting.



Figure 5a



Figure 5b

## DISASSEMBLY

### REMOVING THE FORE-END

Unload the gun. Unscrew the magazine cap (counter clockwise) and remove it. (See figure 6) Slide the fore-end toward the muzzle, and remove it. (See figure 7)

### REMOVING THE BARREL

After removing the fore-end pull the barrel out of the receiver and slide it off the magazine tube. (See figure 8) In order to assure proper operation of the bolt, it's important to clean and lubricate the barrel ring and magazine tube. Also clean and lubricate the pistons after each shooting session. Use a good quality gun cleaning solvent and oil (see figure 9).



Figure 6



Figure 7



Figure 8



Figure 9



## **REMOVING AND INSTALLING THE BOLT GROUP**

To remove the bolt group for cleaning or lubrication, first pull the bolt handle straight out from the right sight of the bolt (See figure 10). Pull the bolt group out of from the front of the receiver (See figure 11).

## **REINSTALLING THE BOLT GROUP**

After cleaning and lubricating the bolt, it can be reinstalled by sliding it back into the receiver. The hammer must be cocked during this procedure. Complete the installation by pushing the bolt handle the back into the bolt.

## **REMOVAL AND RE-INSTALLATION OF THE TRIGGER GROUP**

Unload the gun. In order to remove the trigger group, push the receiver pin through the receiver and remove it by using an appropriate punch. While pushing the cartridge latch button, push the trigger group forward and remove it (See figure 12).



Figure 10



Figure 11



Figure 12

## **REINSTALLING THE TRIGGER GROUP**

After cleaning and lubricating the trigger group, it is reinstalled pressing the cartridge latch button while pushing the trigger group with the hole for the receiver pin, and reinstall the receiver pin.

## **REMOVING AND REINSTALLING CHOKE TUBES**

Unload the gun and put the safety in the "on" position. Remove a choke tube by inserting the choke key, and turning it counter clockwise. After cleaning and lubricating, a choke tube may be reinstalled by starting the threads by hand, then tightening the choke tube with the choke key. (See figure 13, 14)

After each shooting session, the choke should be removed, cleaned, lubricated and reinstalled to prevent corrosion. Consult the choke value chart for suggested values.



Figure 13



Figure 14

## REMOVING THE MAGAZINE PLUG

Since hunting regulations in some areas limit the number of cartridges allowed in the magazine, this shotgun comes with a limiter plug installed that reduces its magazine capacity to two shells.

**WARNING:** Visually and manually check to be sure no ammunition is present in the chamber of magazine.

To remove this plug, follow the directions below:

Unscrew and remove the magazine cap . Push down the magazine plug blocker with your finger and pull up from the slanted end in a diagonal motion. Remove the magazine plug from the end of magazine tube. Replace the magazine cap by screwing it into place. (See figure 15-16)



Figure 15



Figure 16

## MAINTENANCE

Proper maintenance is important to assure the best functioning of the gun, and the safety of the shooter.

Before using the shotgun, make sure that the barrel is clean, and free of any grease or obstruction.

After each shooting session, dismantle the barrel, the barrel choke and the bolt for cleaning and lubrication, reinstall them as instructed.

After every shooting session, clean the magazine tube, the barrel ring and the gas ports (the two small holes that pass from the barrel to the inside of the barrel ring).

Periodically during a shooting session, check the tightness of the magazine cap. If the cap becomes loose, gas will leak and the semi-automatic bolt will not function properly.

## HOW TO USE PISTONS

The 12 Gauge shotgun comes with "1" UNIVERSAL piston (See figure 17) that can work with all kind of loads. Optionally per country's ammunition varieties and climate criteria there can be a second piston offered, marked "HEAVY DUTY". You can remove the piston and insert the other piston easily (See figure 18). If you have 2 pistons offered we recommend using the pistons as it is shown below:

Cartridge 28 gr. (1 oz.) - 32 gr. (1 1/8 oz.) - 36 gr. (1 1/4 oz.) Use the "UNIVERSAL" piston

Cartridge 38 gr. (1 3/8 oz.) - 42 gr. (1 1/2 oz.) - 46 gr. (1 5/8 oz.) and more Use the "HEAVY DUTY" piston

With the correct piston in your shotgun, your gun will enjoy a longer operating life and endure less stress. Your recoil may also be less, thus improving your shot and making operation of your shotgun more comfortable.

**WARNING:** In 12 Gauge shotgun, if you are using the piston marked "HEAVY DUTY" and you want to shoot the cartridges of lesser power, even if occasionally, the shotgun may have problems re-loading or ejecting because this piston is to be used with heavy gram cartridges only.

Figure 17



**WARNING: PLEASE CHECK WITH YOUR DEALER IF THERE IS A SECOND PISTON OFFERED FOR YOUR COUNTRY**



Figure 18

## ADJUSTMENT AND OPTIONS

### CHANGING THE DROP

The stock of the semiautomatic shotgun has a 60mm standard drop. In order to accommodate all shooters' preferences, however, a Drop Change Kit is included as standard.

This kit provide drops of 50,55 and 65 mm and consists of three drop adjustment shims (see figure 19)

Each shim is marked with its corresponding drop measurement. To accommodate left handed shooters, we have also included a left cast shim marked "cast spac" .

To avoid damages at stock during proof tests, we have also included "C.I.P." which does not change any angle and drop measurements.

To change the drop, follow these instructions (see figure 20)

- Using an ordinary Philips or crosshead screwdriver, unscrew the butt plate screws (H) and remove the butt plate

- Remove the stock-retaining nut (F) using a hex box spanner, then remove the elastic washer (E) and take off the stock (C). Now the stock (C) may be removed.

- Insert shim (B) corresponding to the desired drop through the recoil spring tube until the shim is flush with the receiver(A).

- Install the stock and insert the retaining nut (D)

- with its elastic washer (E)

- Tighten the stock retaining nut (F) using the hex spanner

- Install the butt plate and insert the screws (H)

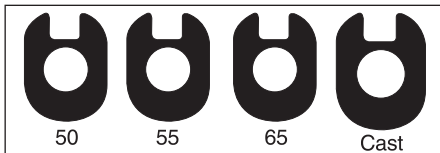


Figure 19



C.I.P

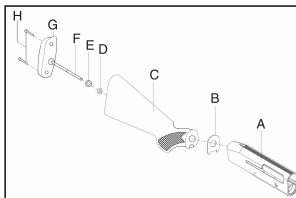







Figure 20

## WHAT'S MULTI CHOKE?

The purpose of multi choke is to make barrel's tip narrowed down to shoot for and more collectively or to enlarge barrel's tip to shoot more wider groupment for small shoots.

### CHOKE TYPE AND AREAS USED FOR SEMI-AUTOMATIC SHOTGUN

CHOKE TYPE	SYMBOL	GAME	PELLET SIZE	USEFUL SHOOTING DISTANCE
FULL *		Goose, Duck, Wood Grouse. For long range hunting with lead shot and tight groups	1-2-3	50-60 meters
IMPROVED MODIFIED **		Duck, Pheasant, Wood Grouse, Rabbit	4-5-6	41-44 meters
MODIFIED ***		Partridge, Pheasant, Quail, Pigeons, Woodcock. For long range hunting with steel shot and tight groups.	5-6-7-8	31-41 meters
IMPROVED CYLINDER ****		Quail, Dove and target shooting. For shorter distance more open shooting.	7-8-9-10-11-12	30-35 meters
CYLINDER *****		For sporting clay and skeet shooting. Short distances more open shooting.	7-8-9-10-11-12	20-30 meters

**WARNING :** Do not use choke values 1,2 or 3 with slugs, single bullets or single projectiles. Do not use choke value 1 or 2 with steel shot.

**WARNING :** Never shot steel shot with a full of improved modified choke, use only modified, improved cylinder or skeet chokes (marked three, four, five cuts respectively).

Do not use choke full, improved modified, modified and (marked one two three cuts) with slugs, single bullets or single projectiles.

# GENERAL ASSEMBLY

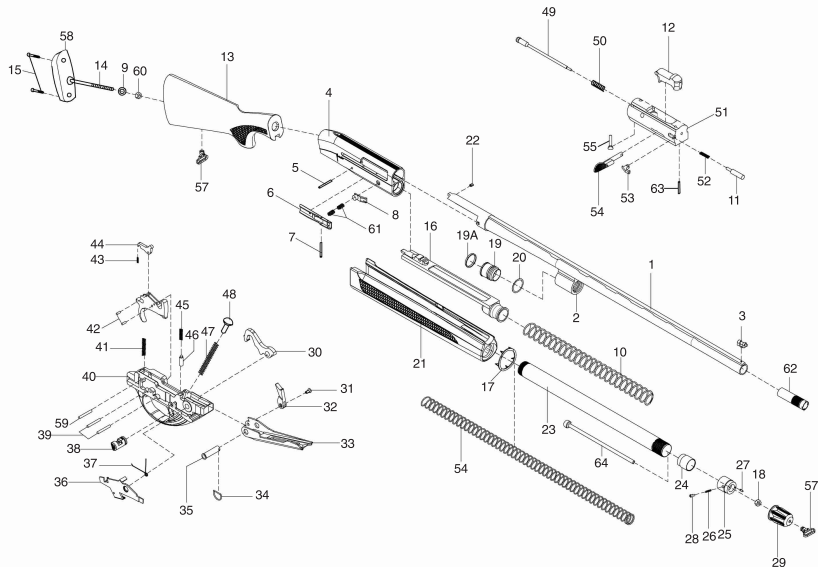
## No Part Name

- 1 Barrel
- 2 Gas Hole
- 3 Front Sight
- 4 Receiver
- 5 Receiver Pin
- 6 Carrier Latch
- 7 Carrier Latch Pivot Pin
- 8 Bolt Release
- 9 Stud Bolt Washer
- 10 Return Spring
- 11 Extractor Spring Pin
- 12 Locking Bar
- 13 Stock
- 14 Stock Bolt Screw
- 15 Recoil Pad Screws
- 16 Action Arm
- 17 Forend Washer
- 18 Swivel Nut
- 19 Gas Piston
- 19a Gas Piston Ring
- 20 Gas Hole Oring
- 21 Forend
- 22 Ejector Pin
- 23 Magazine Tube
- 24 Magazine Short Spring Cap
- 25 Magazine Spring Cap
- 26 Magazine Cap Lock Spring
- 27 Magazine Cap Lock
- 28 Magazine Cap Lock Pin
- 29 Magazine Cap
- 30 Hammer
- 31 Sear Pin
- 32 Sear

## No Part Name

- 33 Elevator
- 34 Elevator Piston Ring
- 35 Elevator Pin
- 36 Cartridge Drop Lever
- 37 Cartridge Drop Lever Spring
- 38 Manuel Safety Button
- 39 Trigger Pin
- 40 Trigger Guard
- 41 Trigger Spring
- 42 Disconnecter Pin
- 43 Disconnecter Spring
- 44 Disconnecter
- 45 Manuel Safety Spring
- 46 Manuel Safety Spring Pin
- 47 Hammer Spring
- 48 Hammer Spring Top Pin
- 49 Firing Pin
- 50 Firing Pin Spring
- 51 Bolt
- 52 Extractor Spring
- 53 Extractor
- 54 Bolt Handle
- 55 Firing Pin's Pin
- 56 Magazine Spring
- 57 Swivel
- 58 Recoil Pad
- 59 Trigger Spring Pin
- 60 Stock Bolt Nut
- 61 Carrier Latch Bolt Spring
- 62 Primo Mobile Choke
- 63 Extractor Pin
- 64 Magazine Plug

# PARTS DIAGRAM





[illegible]



KHAN ARMS



KHAN ARMS



KHAN ARMS



KHAN ARMS



KHAN ARMS



KHAN ARMS



KHAN ARMS



KHAN ARMS



KHAN ARMS



KHAN ARMS



KHAN ARMS



KHAN ARMS



KHAN ARMS



KHAN ARMS



KHAN ARMS



KHAN ARMS



KHAN ARMS



KHAN ARMS



KHAN ARMS



KHAN ARMS



KHAN ARMS



KHAN ARMS



KHAN ARMS



KHAN ARMS



KHAN ARMS



KHAN ARMS



KHAN ARMS



KHAN ARMS



KHAN ARMS



KHAN ARMS



KHAN ARMS



KHAN ARMS



KHAN ARMS



KHAN ARMS



KHAN ARMS



KHAN ARMS



**KHAN ARMS**

**Kayhan Av Tüfekleri San. Ve Dış Tic. Ltd. Şti.**

Yeni Sahra Mah. Necla Sk. No:22 Ataşehir / İstanbul

Tel : +90 216 632 75 55 Fax : +90 216 632 74 44

[www.khanarms.com](http://www.khanarms.com)